



MONMARSH FARM

Marden, Hereford, HR1 3EZ





Monmarsh Farm
Marden
Hereford
HR1 3EZ

Set away from main roads and part of a small cluster of individual properties, a spacious former farmhouse with stables and barns, all set in gardens and land extending to approximately 11 acres.

Price £995,000



Situation and Description

This attractive smallholding is one of a number of individual houses and cottages that make up the small hamlet of Litmarsh, which itself lies between the larger villages of Bodenham and Marden. Situated on a small private lane and well away from main roads, the property is quietly situated, in almost a dark sky location, yet offers easy access to the nearby villages of Bodenham and Marden, which offer a range of local facilities, with more extensive services at the market town of Leominster and at the cathedral city of Hereford which both lie just over 7 miles away.

Monmarsh Farm offers an all too rare opportunity to purchase an unspoilt rural small holding with huge potential for a variety of uses, from home working to business or equestrian. Much improved and extended by the current owners, the house now offers very spacious and adaptable family accommodation which enjoys modern comforts and some lovely views over the surrounding countryside. Set in large gardens and land which extend to approximately 11 acres the land is supported by a large stable block and a range of useful barns and outbuildings which offer covered and enclosed storage and the potential to create an annex if required.

On arrival a porch and oak front door lead into a large entrance hall/boot room, with travertine flooring, brick fireplace with fitted wood burner, and fitted units at one end incorporating a sink unit. Doors then lead to a useful utility and ground floor shower room, both with travertine flooring. A separate snug is ideal for relaxing and has a dual aspect with shuttered windows and could double as a fifth bedroom when required. A large central hallway then leads to the main living accommodation and has exposed brickwork and timbers as well as double glazed panel doors to outside and a useful built-in storage cupboard. The main sitting room is very comfortable and includes a stone fireplace at one end with inset and modern remote controlled log effect gas fire. There are windows and glazed doors to the gardens which also allow plenty of natural light and an adjoining dining room is ideal for entertaining and links to a very impressive and large kitchen/breakfast room, which is without doubt the main hub of this impressive house. Well-appointed throughout with an extensive range of fitted units and oak worktops, there is plenty of useful space which incorporates twin single drainer sink units, a dishwasher, wine fridge, Rangemaster 110 Classic cooker and a central workstation. Windows on two sides allow plenty of light and again there is attractive travertine flooring. The kitchen then opens into a lovely conservatory or



garden room, again with travertine flooring and two sets of doors leading out to the gardens. The ground floor accommodation is then completed by a living room with brick and stone fireplace with fitted wood burner, a separate study which provides a quieter space to work and a good-sized rear porch with double doors to the gardens.

From the dining room a staircase leads up to the first floor which has been newly carpeted throughout. The landing is a good size with a useful study area at one end with window overlooking the stables. The main bedroom suite offers plenty of space and has a vaulted ceiling, double doors to a private balcony, a dressing area and an en-suite shower room. A guest suite also has its own en-suite shower room and there are then two further bedrooms supported by a family bathroom.

Outside

Monmarsh Farm lies in a quiet location on a small unadopted lane with just three other properties. Its own gated driveway leads round to the front of the house where there is a turning circle and extensive parking. From here access can be gained to a range of very useful buildings including a large detached stable block with power and lighting divided into five sections, each approximately (12' x 12'7"). There is then a three bay pole barn (33'2 x 17'9) and a range of other outbuildings offering extensive covered or enclosed storage. Close to the house a good-sized barn offers the potential to be converted into an annex which could offer income potential, or space for extended family.

The gardens and land then extend to approximately 11 acres and in our view are a particular feature of Monmarsh Farm. There are seven small fields which can also be accessed from the lane, which are ideal for equestrian use or for keeping a small head of stock or for hobby farming. The fields are level and full of meadow grass and wildflowers, enclosed by fencing and mixed hedging. They are adjoined by older farm buildings (36'2 x 30'8) and (19' x 19') respectively and a good timber field shelter (12'3 x 11'3). Permission has also been granted for a new barn and the footings are already in place. The gardens then provide additional space to sit and relax and lie close to the house and include lawned areas, an array of plants and shrubs, an attractive fountain and sun terrace. A further large area of lawn lies beyond the stables and enjoys a lovely outlook over the surrounding land with a pretty summerhouse which has power and lighting.





Snug / hall / conservatory and dining room









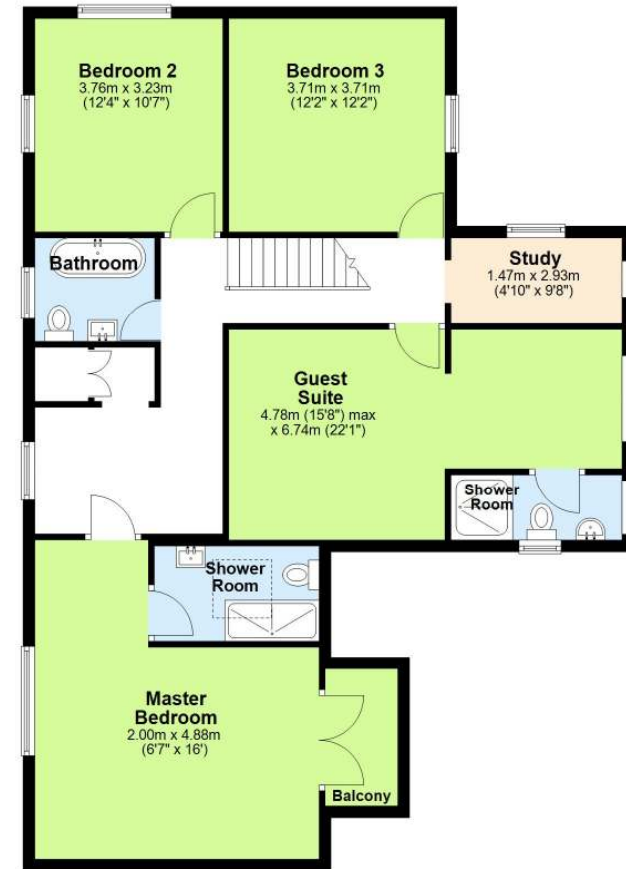
Family bathroom / bedroom / guest suite with en-suite shower room



Ground Floor



First Floor



Total area: approx. 293.4 sq. metres (3157.7 sq. feet)

Plans created by Brookes Bliss Ltd - Plans are not to be assumed as accurate and are not to scale.
Plan produced using PlanUp.

Brookes Bliss

46 Bridge Street, Hereford, Herefordshire HR4 9DG

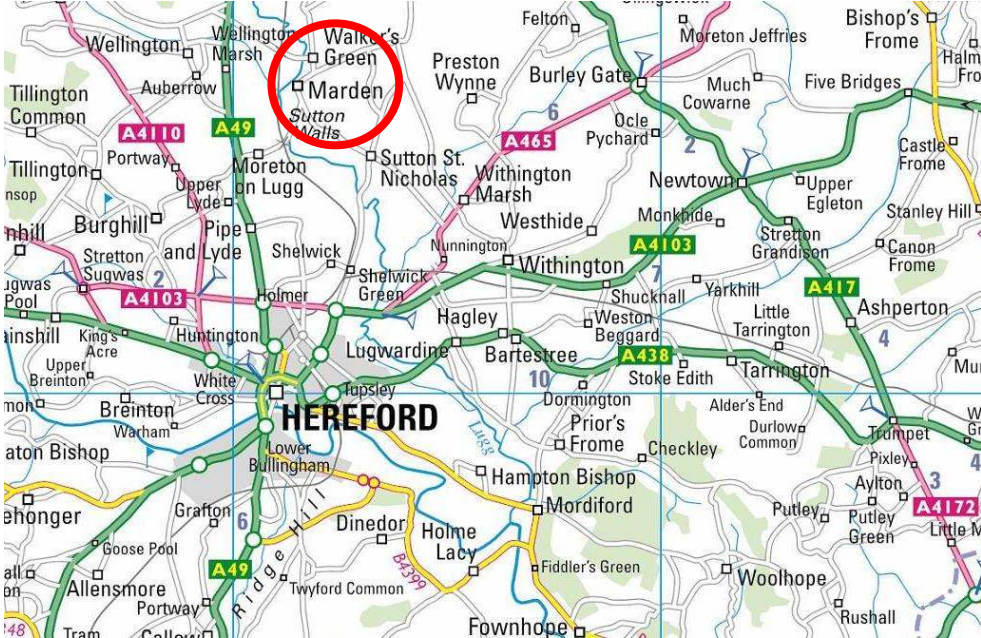
Tel: 01432 343800

sales@brookesbliss.co.uk

brookesbliss.co.uk

rightmove

These particulars are offered on the understanding that all negotiations are conducted through this company. Neither these particulars, nor oral representations, form part of any offer or contract, and their accuracy cannot be guaranteed.



Directions

What3words:///hardening.mailing.maximum
From Hereford take the A49 towards Leominster and Shrewsbury and after 3 miles turn right into Moreton on Lugg village. Continue over the railway line and river bridge and after half a mile turn left towards Marden. On entering the village turn left towards Bodenham and continue for just over 2 miles into Litmarsh. Turn right just before the new houses on the left-hand side and continue on this lane for about a third of a mile. Turn right as signed to Monmarsh and the property is the second house on the left-hand side.

Services and Considerations

- Mains electricity and water.
- Private drainage – new sewage treatment plant 2024
- Oil central heating system installed 2023
- Electric underfloor heating to tiled areas
- Tenure Freehold
- Council Tax Band E / EPC Rating E 46/75
- Mobile coverage 4G / Broadband Gigaclear fibre optic

Rights of way: A footpath crosses part of the land.

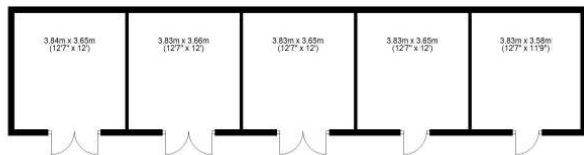
It is not our company policy to test services and domestic appliances, so we cannot verify that they are in working order. These and any matters relating to Rights of Way should be checked with your Solicitor or Surveyor.

Money Laundering Regulations Prospective purchasers will be asked to produce identification, address verification and proof of funds at the time of making an offer.

Monmarsh Farm - Outside Buildings



Outside Buildings



Outside Buildings

